



AUTOMATION  
SERVICE  
INNOVATION

asi[M]<sup>2</sup>

## SQUARING, NAILING AND ROUTING BRIDGE SYSTEM

### FEATURES

Handles frame made of 2x3 to 2x8, up to 30ft long

Max wall and sheathing height = 9-1/2in

Wall frame height from 36in to 148in

Linear speed up to 39in/sec.

Nailer tilts at +/- 5° for vertical sheet joints

Configurable nailing pattern:

- Minimum of 6in spacing (smaller spacing optional)
- Independent settings in between studs and perimeter

Up to 3 nails per second

2000 to 3500 nail coil holder

Intuitive multilingual English, French and Spanish HMI

Wall files read: EHX, Sapphire XML, WCD, ASI, BTL, BTLx

### SAFETY FEATURES

Category 3 high end Schneider-Electric XPSMCM relay with manual acknowledgement

Gantry with light-bar on both sides for instantaneous stops

Safe Torque Off

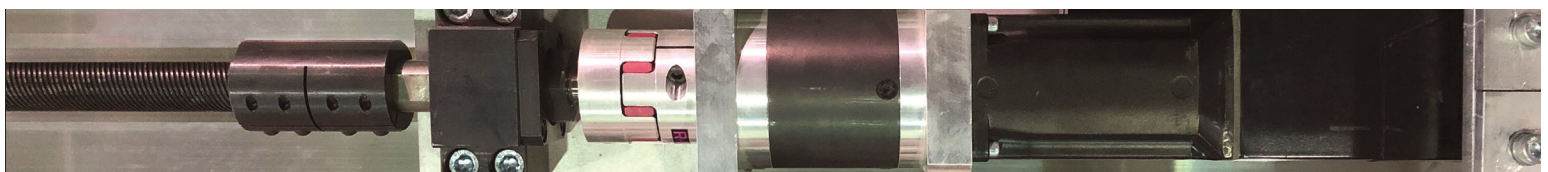
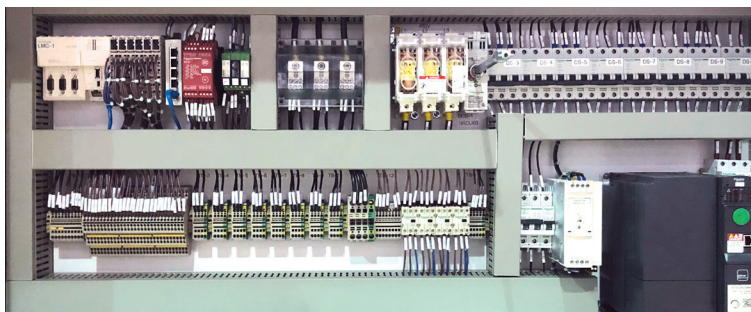
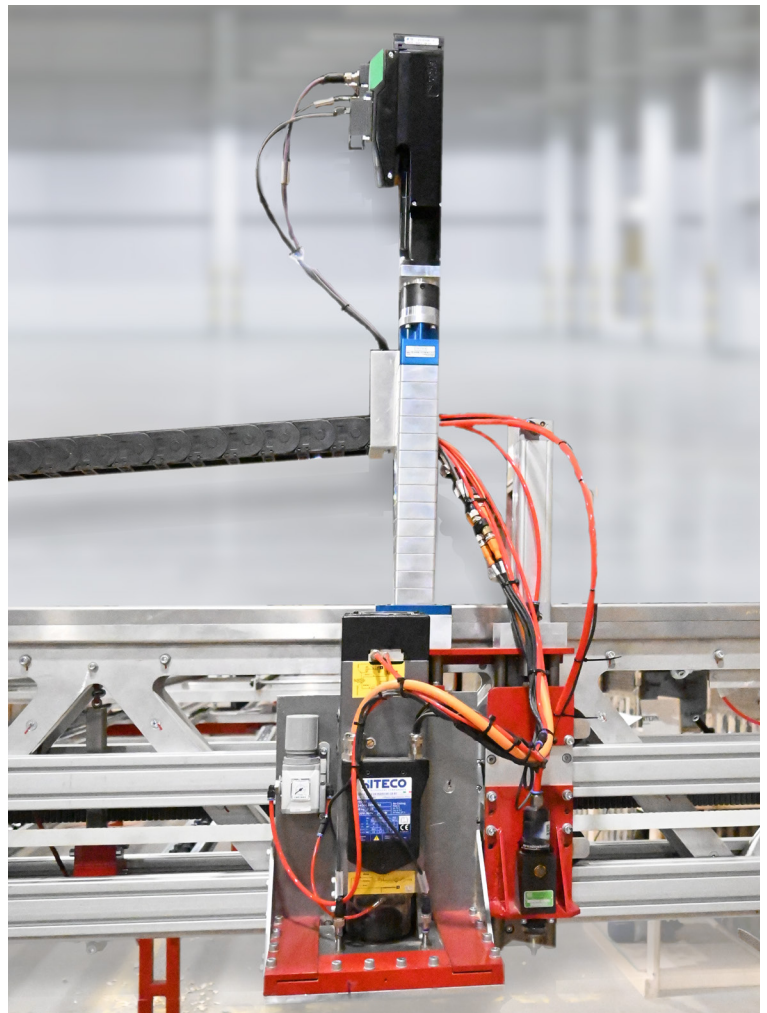
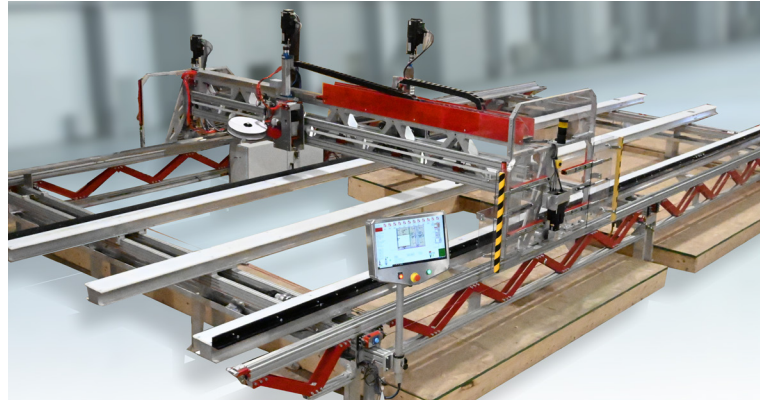
Emergency pull cord all around the perimeter

HMI panel e-stops

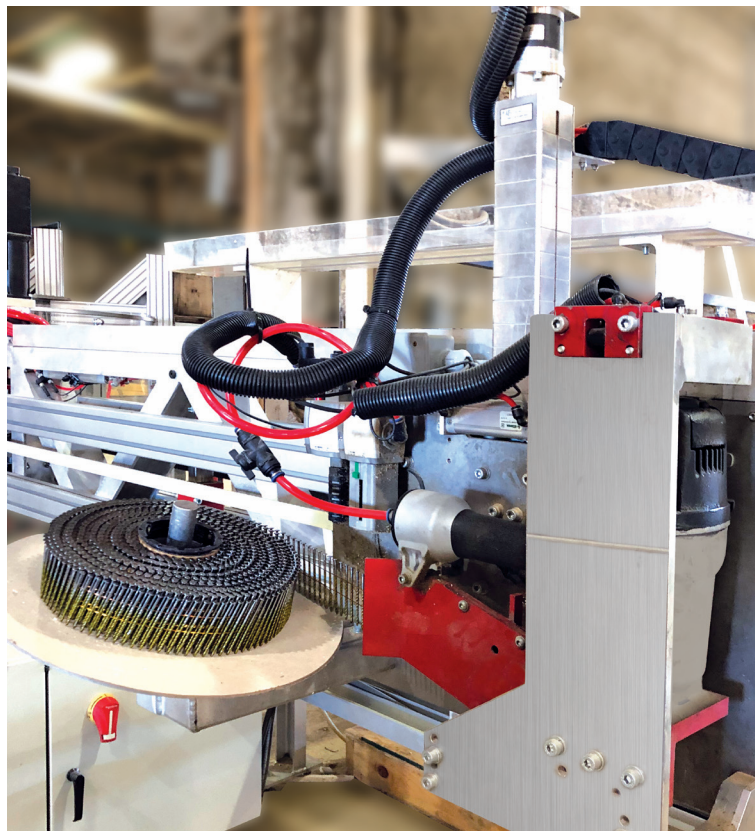
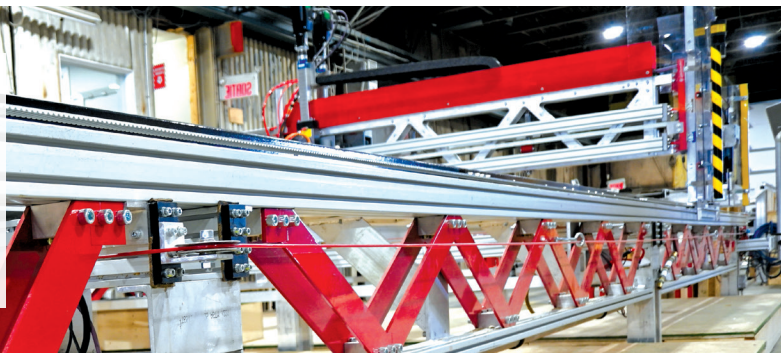
Polycarbonate nail guard

Safety shut-off valve at nailing gun

Air shut-down







**1 6IN STUDS SPACING  
80 TO 110LF PER HOUR**

**CUTS OSB AT A SPEED OF  
12IN/SEC**

## INCLUDES

Squaring and nailing automated system in one single module.  
Optional routing automated module for openings and wind braces

Gantry, nailer and router moving using servomotors linked to steel reinforced belts for higher speed and precision

One (1) MAX CN100 pneumatic nailer, or equivalent, to fix OSB / Aspenite and/or R4 insulating panels:

- Handles nail from 2-1/4 to 4in long; 0.099 to 0.148in diameter
- Unique system using 2.5in roofing nails for R4 panels instead of plastic washers

Numerical control of nailing height:

- Adjustable and recordable

Hybrid aluminum-steel structure

Eight (8) Schneider-Electric high resolution, high torque, high speed servomotors series BMi702P and BMi703P series

Planetary gearboxes with lifetime lubrication for increased efficiency and minimal maintenance

Thirty (30) feet exit conveyor

24in Lenovo touchscreen SSD computer with asi(m) software and Windows 11 Pro OS, c/w ultra-intuitive human machine interface

Electrical control panel cULus certified

Easy axis by axis calibration

Manual & automatic modes

Lifetime access to software updates

## OPTIONS

asi(M)1 wall extrusion module

5 HP 380VAC/3PH 18 000 rpm router with solid carbide cutting tool :

- Comes with a ball bearing to minimize possible damage at openings corners
- Pneumatic drill included to drill the approach hole for the router
- Drill mounted on pneumatic axis

Supplementary monitor showing panel cut details

Lot of critical spare parts

Tempered glass industrial PC upgrade

Periodic maintenance program



[asinnovation.ca](http://asinnovation.ca) | 450.565.3553



2024\_ASiM2\_ENG