



AUTOMATION
SERVICE
INNOVATION

asi[M]²

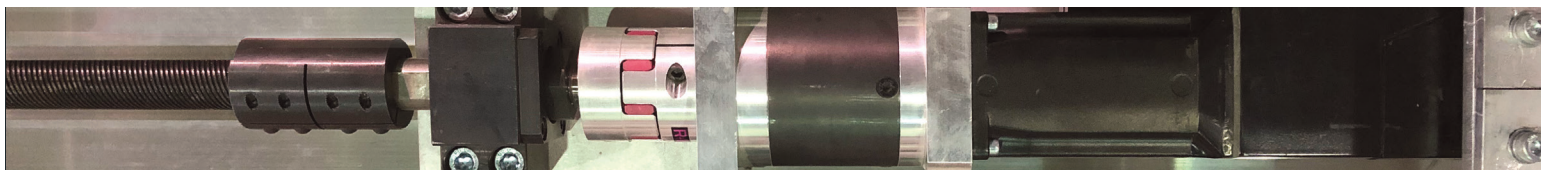
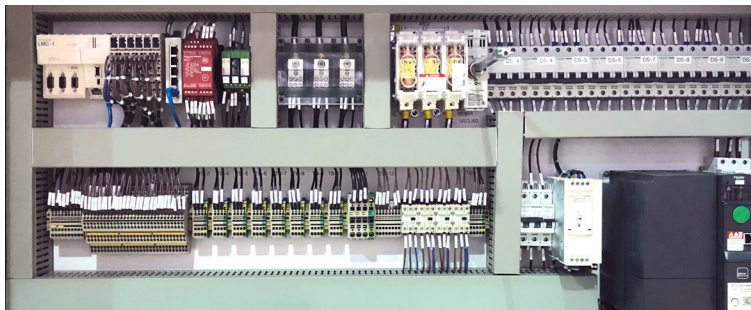
SQUARING, NAILING AND ROUTING BRIDGE SYSTEM

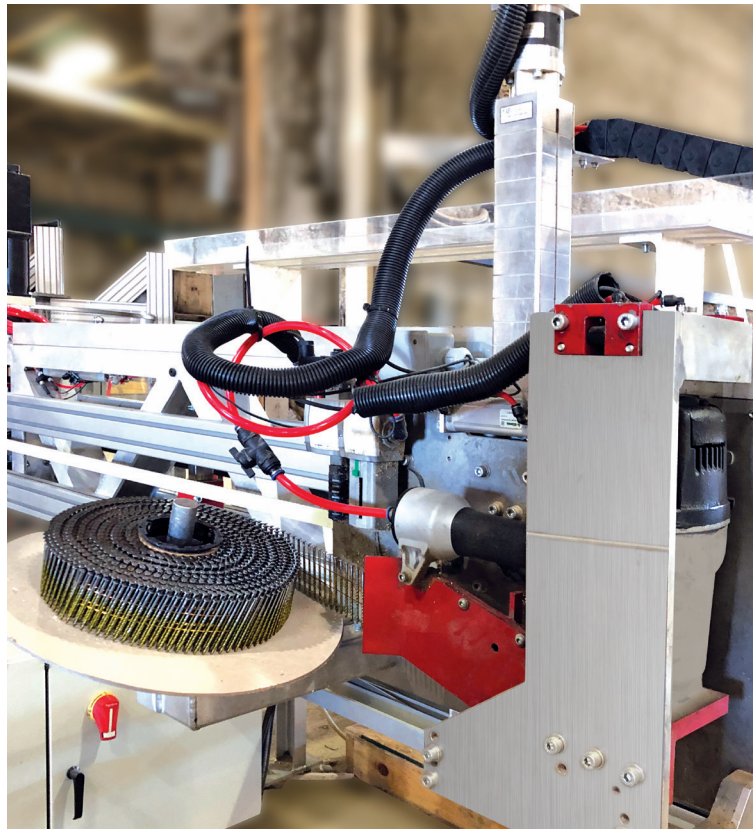
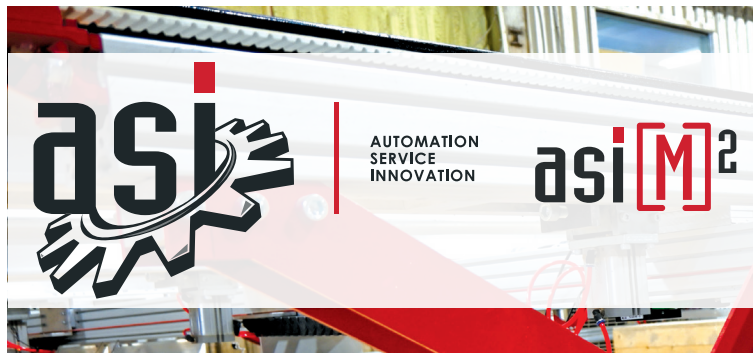
FEATURES

- Handles frame made of 2x3 to 2x8, up to 30ft long
- Max wall and sheathing height = 9-1/2in
- Wall frame height from 34in to 148in
- Linear speed up to 39in/sec.
- Nailer tilts at +/- 5° for vertical sheet joints
- Configurable nailing pattern:
 - Independent settings in between studs and perimeter
- Nailing speed adjusts to nailer capacity
- Up to 3 nails per second
- 2000 to 3500 nail coil holder
- Intuitive multilingual English, French and Spanish HMI
- Wall files read: EHX, Sapphire XML, WCD, ASI, BTL, BTLx

SAFETY FEATURES

- Category 3 high end Schneider-Electric XPSMCM controller with manual acknowledgement
- Gantry with light-bar on both sides for instantaneous stops
- Safe Torque Off (STO)
- Emergency pull cord all around the perimeter
- HMI panel e-stops
- Polycarbonate nail guard
- Safety zero energy shut-off valve at nailing gun
- Air shut-down





**16IN STUDS SPACING
80 TO 110LF PER HOUR**

**CUTS OSB AT A SPEED OF
12IN/SEC**

INCLUDES

Squaring and nailing automated system in one single module.
Optional routing automated module for openings and wind braces

Gantry, nailer and router moving using servomotors linked to steel reinforced belts for higher speed and precision

One (1) MAX CN100 pneumatic nailer, or equivalent, to fix OSB / Aspenite and/or R4 insulating panels:

- Handles nail from 2-1/4 to 4in long; 0.099 to 0.148in diameter
- Unique system using 2.5in roofing nails for R4 panels instead of plastic washers

Numerical control of nailing height:

- Adjustable and recordable

Hybrid aluminum-steel structure

Eight (8) Schneider-Electric high resolution, high torque, high speed servomotors BMI series

Planetary gearboxes with lifetime lubrication for increased efficiency and minimal maintenance

Thirty (30) feet exit conveyor

24in Lenovo touchscreen SSD computer with asi(m) software and Windows 11 Pro OS, c/w ultra-intuitive human machine interface

Electrical control panel cULus certified

Easy axis by axis calibration

Manual & automatic modes

Lifetime access to software updates

OPTIONS

asi(M)1 wall extrusion module

5 HP 380VAC/3PH 18 000 rpm router with solid carbide cutting tool :

- Comes with a ball bearing to minimize possible damage at openings corners
- Pneumatic drill included to drill the approach hole for the router
- Drill mounted on pneumatic axis

Supplementary monitor showing panel cut details

Lot of critical spare parts

Periodic maintenance program



asinnovation.ca | 450.565.3553



2025_ASI[M]2_ENG